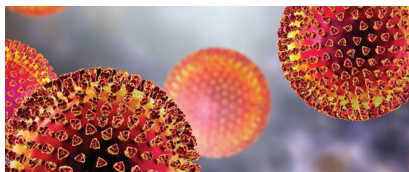


2019 Novel Coronavirus (2019-nCoV)

Date: January 28, 2020



The Centers for Disease Control and Prevention (CDC) is closely monitoring an outbreak of respiratory illness caused by a novel (new) coronavirus first identified in Wuhan, Hubei Province, China. Chinese authorities identified the new coronavirus, which has resulted in more than a thousand confirmed cases in China, including cases outside Wuhan City. Additional cases have been identified in a growing number of other international locations, including the United States. The US Centers for Disease Control (CDC) is closely monitoring the situation and provides comprehensive and timely updates.¹



What are coronaviruses?

Coronaviruses are a large family of viruses that were first identified in the mid-1960s and are common in many different species of animals, including camels, cattle, cats, and bats. Coronaviruses are not typically transmitted between animals and humans. With the discovery of 2019 Novel Coronavirus there are now seven strains of coronavirus known to be capable of transmission from animals to humans. Severe Acute Respiratory Syndrome (SARS) CoV was responsible for a large outbreak in 2003 and Middle Eastern Respiratory Syndrome (MERS) CoV was responsible for an outbreak in 2012.²

Many of the patients in the outbreak in Wuhan, China reportedly had some link to a large seafood and animal market, suggesting animal-to-person spread. However, a growing number of patients reportedly have not had exposure to animal markets, and there is evidence that person-to-person spread is occurring.¹

What are the symptoms of a human coronavirus infection?

Common human coronaviruses usually cause mild to moderate upper-respiratory tract illnesses, like the common cold. Symptoms may include runny nose, headache, cough, sore throat, fever, a general feeling of being unwell. Human coronaviruses can sometimes cause lower-respiratory tract illnesses, such as pneumonia or bronchitis. This is more common in people with cardiopulmonary disease, people with weakened immune systems, infants, and older adults.³

How are coronaviruses spread?

Coronaviruses typically spread via close contact, or respiratory droplets produced when an infected person coughs or sneezes, similar to how influenza and other respiratory pathogens spread.⁴

Why are coronaviruses and particularly nCoV a concern?

Most people get infected with a human coronavirus at some point in their lives and experience cold-like symptoms a few days before recovering. However, novel coronaviruses - such as MERS-CoV, SARS-CoV, and 2019-nCoV cause severe symptoms including fever, cough and shortness of breath that can lead to pneumonia and even death. These coronaviruses can quickly spread from person to person and can lead to widespread outbreaks. In the case of 2019-nCoV, there is neither a vaccine nor specific treatment.

Infection Control Measures

There is currently no vaccine to prevent 2019-nCoV infection. The best way to prevent infection is to avoid being exposed to this virus. However, as a reminder, CDC always recommends everyday preventive actions to help prevent the spread of respiratory viruses, including:

- Wash your hands often with soap and water for at least 20 seconds.
- Avoid touching your eyes, nose, and mouth with unwashed hands.
- Avoid close contact with people who are sick.
- Stay home when you are sick.
- Cover your cough or sneeze with a tissue, then throw the tissue in the trash.
- Clean and disinfect frequently touched objects and surfaces with an EPA registered disinfectant.
- CDC recommends wearing a surgical mask as soon as they are identified. Personnel entering the room should use standard precautions, contact precautions, and airborne precautions, and use eye protection.

NCL® PRODUCT RECOMMENDATIONS:

The products listed below have all demonstrated effectiveness against Human Coronavirus and SARS Associated Coronavirus on hard, non-porous surfaces. Therefore, we recommend the products listed below for use, in accordance with label directions. All products have a 10 minute kill claim unless otherwise noted.

Standard Precaution Recommendations from World Health Organization (WHO) include:

“Ensure that environmental cleaning and disinfection procedures are followed consistently and correctly. Thorough cleaning of environmental surfaces with water and detergent and applying commonly used hospital level disinfectants is an effective and sufficient procedure.”⁶

	Product No.	Product Name
Bulk Disinfectants	0248	Neutral-Q Disinfectant Cleaner
	0255	MicroChem Plus Detergent / Disinfectant
	0275	Neutracide 256 Neutral Disinfectant Cleaner / Deodorizer
	0234	Citrus Flower-Quat Disinfectant, Cleaner, Mildewstat, Fungicide, Virucide, Deodorizer
	0241	Pine-Quat Plus Disinfectant, Cleaner, Mildewstat, Fungicide, Virucide, Deodorizer
	0235	Lemon-Quat Disinfectant, Cleaner, Mildewstat, Fungicide, Virucide, Deodorizer
	0230	Lavender-Quat Disinfectant, Cleaner, Mildewstat, Fungicide, Virucide, Deodorizer
	0236	Mint-Quat Disinfectant, Cleaner, Mildewstat, Fungicide, Virucide, Deodorizer
	0270	Combat Odor Eliminator / Neutral Disinfectant Cleaner
	4038	Earth Sense® Neutral Disinfectant Detergent
Dilution Control	4173	Main Squeeze Lavender 256 Neutral Disinfectant Cleaner Deodorizer
	5078	Dual Blend® #8 HD Detergent / Disinfectant
	5079	Dual Blend® #9 Neutral Disinfectant Cleaner 256
	5089	Dual Blend® #19 Lavender Disinfectant 256
	5090	Dual Blend® #20 Bathroom Plus Concentrate
	4078	Ready...Set...CLEAN™ #8 HD Detergent / Disinfectant
	4079	Ready...Set...CLEAN™ #9 Neutral Disinfectant Cleaner 256
	4007	Twin Power® #7 Healthcare Disinfectant Neutral Cleaner
	4017	Twin Power® #17 HD Detergent / Disinfectant
	4021	Twin Power® #21 Earth Sense® Neutral Disinfectant Cleaner 256
RTU	0252	Avistat-D Ready-To-Use Spray Disinfectant Cleaner 2 min. Kill
	1715	Germi-Kleen Non-Acid Bowl & Bathroom Disinfectant Cleaner 2 min. Kill
WIPES	4541	NCLwipes™ DISINFECTING WIPES Waterfall Fresh
	4542	NCLwipes™ DISINFECTING WIPES Lemon Fresh

References:

¹ <https://www.cdc.gov/coronavirus/2019-nCoV/summary.html>

² <https://www.cdc.gov/coronavirus/index.html>

³ <https://www.cdc.gov/coronavirus/about/symptoms.html>

⁴ <https://www.cdc.gov/coronavirus/about/transmission.html>

⁵ <https://wwwnc.cdc.gov/travel/notices/alert/novel-coronavirus-china>

⁶ [https://www.who.int/publications-detail/infection-prevention-and-control-during-health-care-when-novel-coronavirus-\(ncov\)-infection-is-suspected-20200125](https://www.who.int/publications-detail/infection-prevention-and-control-during-health-care-when-novel-coronavirus-(ncov)-infection-is-suspected-20200125)



World Class Cleaning Solutions®

Philadelphia, PA 19123 • (800) NAT-CHEM

Website: www.nclonline.com • E-Mail: info@nclonline.com