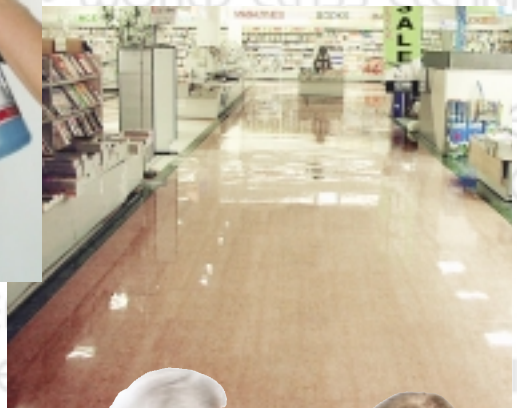


**Confidence...**

***it's a part of everything  
we produce!***



# A tradition of excellence...



For over 50 years, the sanitary maintenance industry has turned to National Chemical Laboratories for our expertise in solving the toughest cleaning and maintenance problems. Our response to these challenges has earned NCL an international reputation for **exceptional performance and maximum product value.**

Today, our broad line of TOTAL SURFACE SOLUTIONS™ is exceeding the expectations of customers across North America, Central and South America, the Caribbean, as well as the Middle East and Asia.



# A tradition of quality...



Our on-site, computerized laboratory is staffed by industry-renowned chemists.

Unique manufacturing processes give you the assurance that our products have passed rigorous quality control standards.

Our comprehensive range of cleaning and maintenance systems offers **the advantage of single sourcing for all your janitorial chemical needs.** Whether it's hard surface resilient floors, natural stone or ceramic tile care, carpet care, restroom sanitation, industrial maintenance, supermarkets or foodservice, there's an NCL product program designed to maximize labor efficiency and control cleaning budgets.



NCL is headquartered in Philadelphia, Pennsylvania, with a one-half million square foot manufacturing and operations center. We utilize large, high pressure reactors for the production of captive raw materials used in many of our products. With a combined inventory of over 3 million gallons of raw material and finished products, our facility is one of the largest of its type in the United States.

# A tradition of innovation...

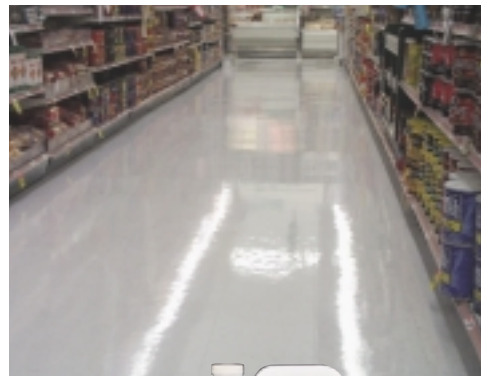
National Chemical Laboratories has been a leader in producing innovative chemical formulas that truly save labor and money.

High performance products such as BARE BONES No-Rinse, No-Scrub Liquifying Stripper, which has set the standard for performance for nearly a decade.

New technologies as in our ONE™ Super High Solids Labor Saving Sealer Finish.

Complete maintenance programs for **stone, ceramic and rubber care.**

We have a proud past in pioneering significant new products and are poised for dramatic growth in the years ahead!



# A tradition of service & support...

NCL recognizes that **proper instruction is essential to the correct, effective use of our products.** Intensive Training programs include regular seminars on floor care and stone care (held in Philadelphia), and our CD-ROM Interactive Training and manuals provide a well-rounded understanding of surfaces and proper maintenance procedures.

We strive to provide the **highest level of customer service** to help keep your business running smoothly. Our technical support staff is highly trained and readily available to answer any cleaning problem, and the dedicated team of



NCL regional representatives and in-house technical service representatives are on call to provide further assistance.







## **WORLD CLASS CLEANING SOLUTIONS®**

- *Hard Surface Floor Care*
- *Stone Care Solutions™*
- *Ceramic Tile Care*
- *Rubber Floor Care*
- *Carpet Care*
- *UNISON™ Restroom Care*
- *Hand Care*
- *Food Service/  
Supermarket Sanitation*
- *Industrial Maintenance*
- *POWER SPRAY™ Aerosol  
Maintenance Products*
- *Biologically Engineered  
Maintenance Products*
- *EARTH SENSE®  
Chemical Management  
Systems*

*WORLD CLASS Fully Illustrated  
Product System Literature  
and Electronic Program  
Brochures CD-ROM*



*WORLD CLASS Training  
Manuals and CD-ROM  
Training Programs*



**National Chemical Laboratories**

**WORLD CLASS CLEANING SOLUTIONS™**

401 N. 10th Street • Philadelphia, PA 19123 • 1-800-628-2436  
sales@nclonline.com • www.nclonline.com