



National Chemical Laboratories, Inc.

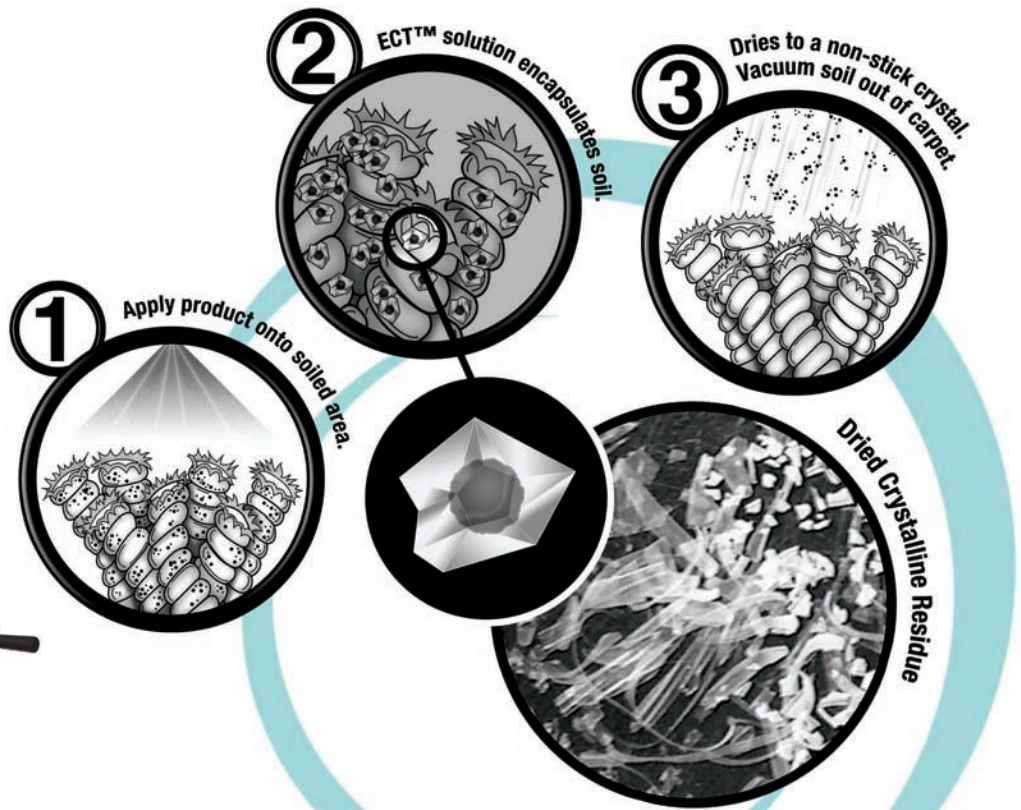
World Class Cleaning Solutions®

Low Moisture Encapsulation Cleaning Program



all-in-one™

ect™ *Encapsulating Crystal Technology*



featuring the

Carpet Blazer 20™

**High Production
Carpet Encapsulation Machine**

Carpet Care Solutions™



Low Moisture Encapsulation Cleaning Program

LOW MOISTURE ENCAPSULATION

Low Moisture Encapsulation is a highly efficient, new, evolving method for carpet cleaning. The most common low moisture cleaning method is bonnet cleaning. Traditional bonnet based cleaning methods (using cotton pads) remove some surface dirt, but can also drive soils deeper into the carpet fiber. Deeply embedded soils are seldom removed with bonnet cleaning methods.

Low Moisture Encapsulation cleaning is totally different than traditional bonnet cleaning. Rather than trying to remove soils, with the ALL-IN-ONE™ Carpet Cleaning Program the primary purpose is to break down the soil, surround (encapsulate) it into particles that are easily removed with ordinary vacuuming. The Carpet Blazer™ does this by applying and scrubbing ALL-IN-ONE™ Encapsulating Carpet Cleaner deep into the carpet.



The powerful agitation from the Carpet Blazer™ and special cleaning agents in ALL-IN-ONE™ separate the dirt from the carpet's fibers and encapsulates it in tiny clumps for vacuuming later. The carpet actually looks remarkably clean, even though the dirt has not been removed yet. The fine powder, which includes the dirt, is removed the next time the carpet is vacuumed.

The ALL-IN-ONE™ Low Moisture Carpet Cleaning method owes its success to the combination of the equipment and the chemical. The Carpet Blazer™ does a superior job delivering and agitating the carpet, while the ALL-IN-ONE™ responds to this application method to encapsulate and remove dirt with maximum effectiveness.

Benefits of Low Moisture Cleaning Methods

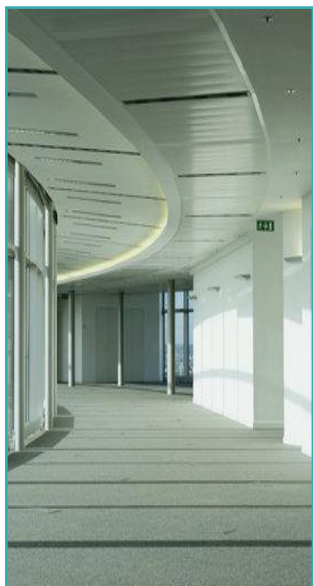
- Dries to a non-sticky crystal
- Vacuums out easily
- Reduces re-soiling
- Lengthens time between cleanings
- Extends life of the carpet
- Improves indoor air quality
- Reduces labor costs

NCL Suggested Carpet Cleaning Package:

1. NCL Carpet Blazer™ High Production Carpet Encapsulation Machine with 60 psi Spray System
2. NCL ALL-IN-ONE™ Encapsulating Carpet Cleaner
3. NCL ALL-IN-ONE™ RTU Encapsulating Carpet Cleaner and Spot Remover
4. NCL CARPET MAGIC™ Carpet Care Pads



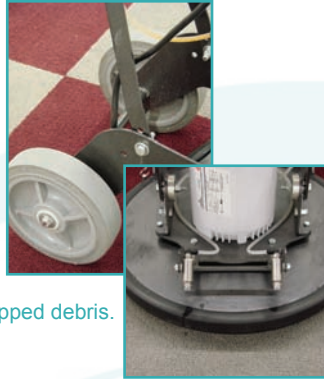
National Chemical Laboratories, Inc.
World Class Cleaning Solutions®



LOW MOISTURE ENCAPSULATION PROCEDURES:

Machine set-up before use:

1. Before each use, check for loose nuts or bolts and tighten if necessary.
2. Check that all hoses are properly attached and tight.
3. Straighten, adjust, and tighten the spray jets on the front of the Carpet Blazer™ machine to spray just ahead of the pad.
4. Check the filter on the back of the machine and remove any trapped debris.



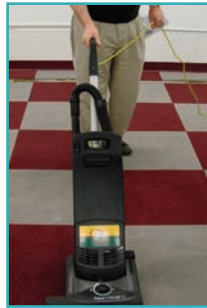
Add Solution to Machine:

1. Add diluted ALL-IN-ONE™ Encapsulating Carpet Cleaner (1.33 oz per gallon of warm water) to the solution tank. Pour diluted chemical through the opening on the top of the tank.
2. Check the spray pattern on the spray jets. If the spray jets become clogged, unscrew them and rinse with water. Then screw them back into place, making sure they are straight and aimed to spray just in front of the machine.
3. Place an NCL Carpet Magic™ Carpet Care Pad under the pad driver.
4. Make sure the on/off switch is in the off position (0) before plugging the machine into the power outlet.



Pre-Vacuuming:

1. Pre-vacuuming is the first step in any carpet cleaning process. Removal of the dry soil is very important. Adding cleaning solution to a carpet filled with dry dirt would essentially make mud.
2. Prepare the area to be cleaned. Arrange the work area for best results. Remove any furniture or items that are required.



Carpet Cleaning Procedure:

CAUTION: Pre-test each surface to be cleaned in a hidden area. Check for any color or texture change. If any color or texture change occurs, stop cleaning IMMEDIATELY!

1. Lay a NCL Carpet Magic™ pad on the carpet. Align the machine in the center of the pad.
2. Clean carpet by making a wet-pass over a workable area (5' x 10'). Spray ALL-IN-ONE™ cleaning solution onto the dry carpet while agitating the surface. Then pass over the same area a second time without applying more cleaning solution. Walk at a comfortable pace. Spray chemical when moving forward only. In most cases one wet-pass followed with one dry-pass is all that is needed. DO NOT OVERWET THE CARPET.
2. For extra cleaning on traffic lanes and spots, change from the NCL Carpet Magic™ pad to a cotton bonnet. Spray, clean, and absorb the dirt on the heavily soiled traffic lanes and heavily soiled spots to prevent wicking and re-soiling.



Note: Use ALL-IN-ONE™ RTU for heavily soiled traffic areas and spotting. If the carpet needs a little more scrubbing because it is heavily soiled simply make additional dry passes (just a touch more solution can be applied during the extra passes). Clean until this side of the cotton pad is heavily soiled. Pull the cotton pad from the pad driver, turn it over and clean with this side of the cotton pad. This way both sides of the cotton pad are used to remove dirt and moisture and fewer cotton pads are used.

NOTE: Make sure the pad is laying flat without any creases or wrinkles. Do not operate the machine with a wrinkled or creased pad, as it can cause the machine to become difficult to operate and can also damage the carpet. Do not operate the machine on dry carpet. Keep the machine moving to prevent heat buildup.

3. Let the carpet dry thoroughly.
4. Routine vacuuming will continue to remove the encapsulated soil from the carpet.

Operating Procedures for the Carpet Blazer™:

1. The Carpet Blazer™ is equipped with a 60 psi dual jet spray system. The spray system applies cleaning products simply and quickly.
2. Start the machines by depressing the switch on the front of the handle. (I) is the ON position. (0) is the OFF position.
3. Depress the Spray Lever under your right hand fingers as you move the machine forward. This sprays the ALL-IN-ONE™ onto the carpet fibers ahead of the cleaning pad.



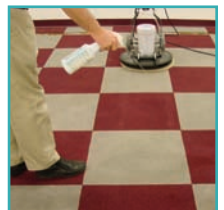
Note: The on/off lever on the solution hose valve on the back side of the machine can be adjusted to spray the right amount of solution. Normally a gallon of diluted ALL-IN-ONE™ will be applied every 300-400 square feet of carpet. Normally the lever should be at 45 degree angle, ½ open to give approximately the right amount of coverage.

4. The cleaning product is only sprayed while moving forward in a new area of dry carpet. If the area needs more work, continue moving the Carpet Blazer™ in a back and forth motion, but unless very soiled, do not keep applying more solution.



Cleaning Carpet in Worn, Heavy Traffic or Spotted Areas:

1. These areas of carpet can make the whole carpet cleaning job look bad unless extra care is taken by the operator.
2. Using a dry Carpet Magic™ Carpet Care Pad, re-spray the area with ALL-IN-ONE™ RTU and move the machine in different directions to loosen and absorb the soil from the carpet.
3. With the ALL-IN-ONE™ Carpet Cleaning System, it is important to vacuum properly. This system uses a process and cleaners designed to release soil from the carpet fibers, encapsulate the soil while wet, then it dries, crystallizes, shatters, and is then vacuumed away.
4. Proper vacuuming will allow this system to not only keep your carpet looking fantastic, but will increase overall carpet life considerably.



STORAGE

Machine Storage:

Store the Carpet Blazer™ with the head tilted back, this raises the brush off the floor.

Pump all excess cleaning solution from the tank. Do this by disconnecting the brass quick disconnect solution line and depressing the spray system lever on the handle under your right hand. This will pump the remaining solution out of the system. It is also recommended that the system be flushed with water when you are putting the machine away and storing it for the next cleaning. This will keep the jets from getting clogged with dried carpet cleaning products.

Cleaning Filters:

The filter should be cleaned monthly. Unscrew the filter base and empty out any debris particles. Rinse, then replace the filter and screen.

Cleaning Products:

Cleaning products can be stored in any dry, secure place. Keep out of the reach of children.

Pads:

The cotton pads need to be laundered in a standard washing machine after use and dried in a clothes dryer. After drying, cotton pads can be stacked flat, folded in half and placed in a 5-gallon pail for storage.

PADS — SELECTION AND USE

Rubberized Fiber Scrub Pads:

Carpet Magic™ Carpet Care Pads will greatly enhance the speed with which you can clean. The Carpet Magic™ Carpet Care Pads will scrub the ALL-IN-ONE™ Encapsulating Carpet Cleaner into the carpet so it can encapsulate the soil. Both sides of the pad should be used.

These pads do not absorb any soil, so they do not need to be changed until they wear out or when the bristles of the pad driver brushes come through to the back side of the scrubber pad. When this happens, the CARPET BLAZER™ will be very difficult to push or move across the carpet.

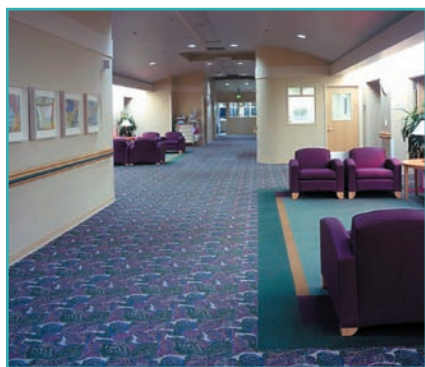
Polyester Bonnets:

Polyester Bonnets can be used to scrub the ALL-IN-ONE™ Encapsulating Carpet Cleaner into the carpet so it can encapsulate the soil.

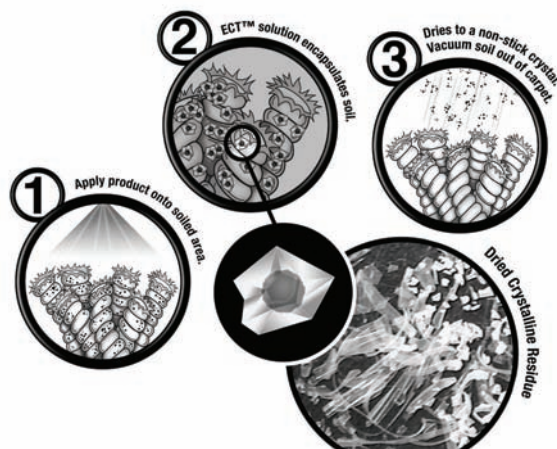
Cotton Pads:

Cotton Pads should be used after cleaning for spotting and heavily soiled areas to absorb the excess dirt and moisture. This will prevent the spots and dirt from wicking back. Both sides of the cotton pad should be used.

While cleaning the spots and heavily soiled traffic areas, the cotton pads should be changed every 20 to 100 square feet, depending on the amount of dirt being absorbed. If the cotton pad is allowed to get too soiled, it will actually slow down the cleaning process.



Low Moisture Encapsulation Cleaning Program



National Chemical Laboratories, Inc.

World Class Cleaning Solutions®

401 N. 10th Street • Philadelphia, PA 19123
1-800-NAT-CHEM • 215-922-1200 • FAX: 215-922-5517
www.nclonline.com • e-mail: info@nclonline.com

For sales and service: